

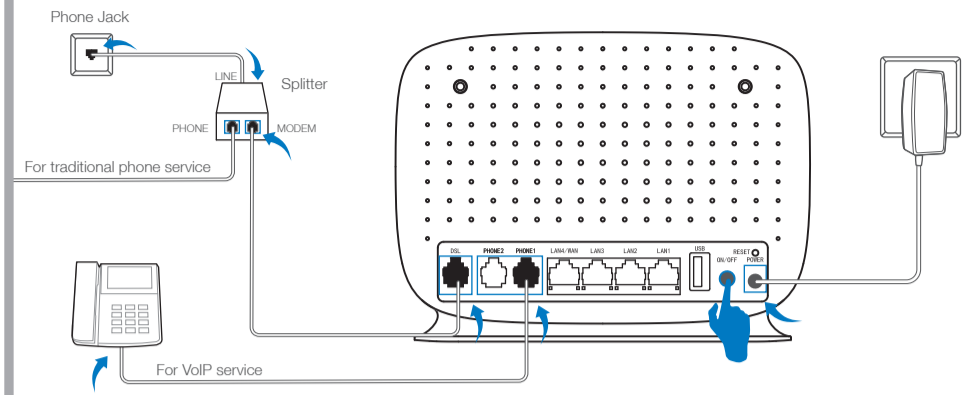
Quick Installation Guide

300Mbps Wireless N VoIP VDSL/ADSL Modem Router
TD-VG5612



1. Connecting the Hardware

1 Connect the splitter and power adapter as follows. Then press the POWER ON/OFF button.



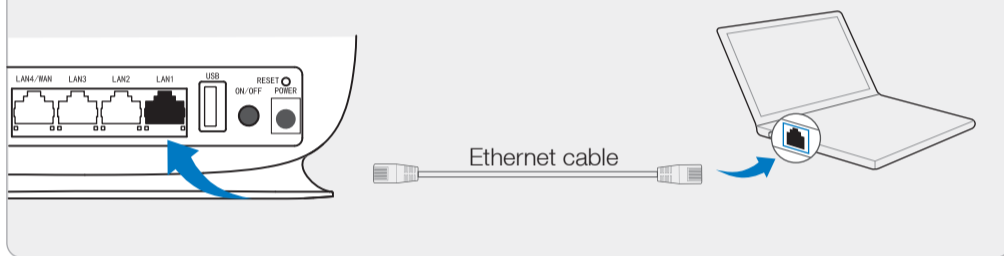
2 Please wait for 1 - 2 minutes till Power and DSL LEDs are on, then continue to configure the modem router.

2. Configuring the Modem Router

Method 1 Via Web Browser

1 Connect your computer to the modem router (Wired or Wireless).

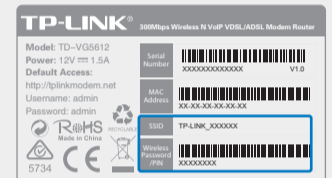
• Wired



Or

• Wireless

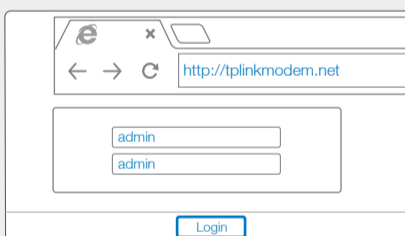
Connect wirelessly by using the default network name (SSID) and password on the product label printed on the bottom of the modem router.



2 Open a web browser on the computer and configure the modem router according to the following main clues.

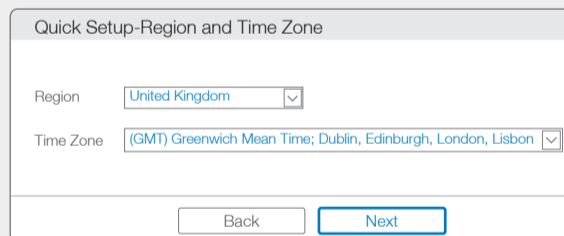
a Enter **http://tplinkmodem.net** or **http://192.168.1.1** in the address bar. Type in **admin** for both the username and password and click **Login**.

Note: If the login window does not appear, please refer to FAQ->Q1.

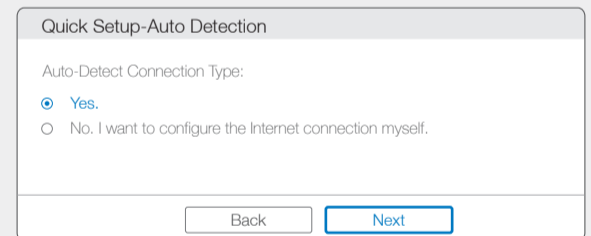


b Choose **Quick Setup** in the main menu and then click **Next** to start the configuration. Select your **Region** and **Time Zone** from the drop-down list, and then click **Next**.

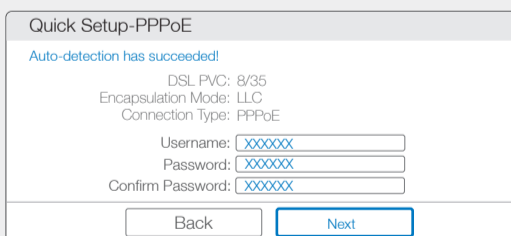
Note: Per FCC regulations, all Wi-Fi products marketed in the U.S. must be fixed to the U.S. region only.



c Select **Yes** to auto detect your connection type and then click **Next** to continue.

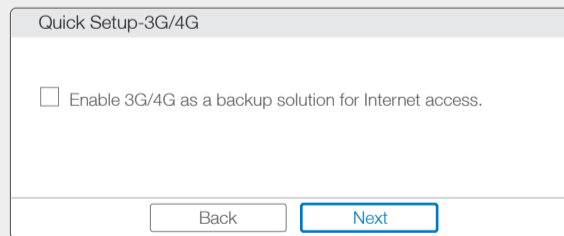


d Enter the parameters provided by your ISP and then click **Next**. Here we take **PPPoE** as an example.



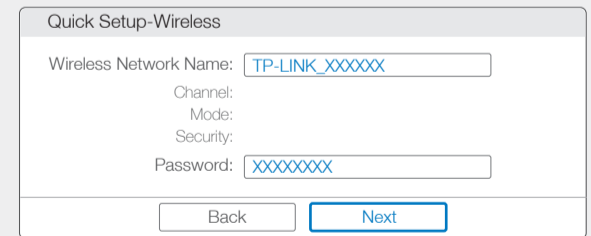
e Click **Next** to continue.

Note: You may enable 3G/4G as a backup method for Internet access.

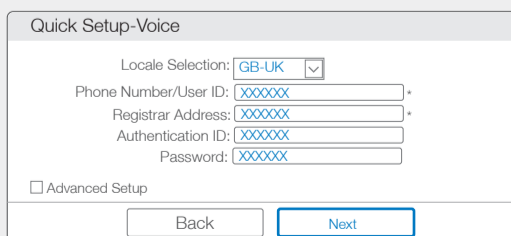


f Click **Next** to continue.

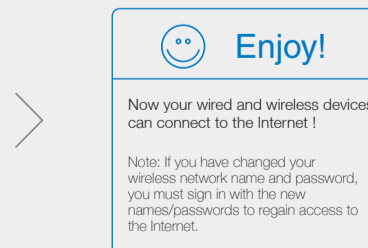
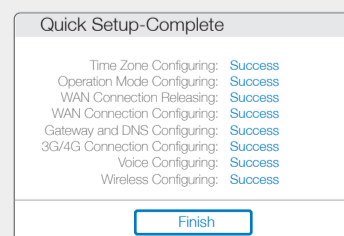
Note: You may rename your wireless network name and create your own password.



g Enter the Voice parameters provided by your ISP and then click **Next**. If needed, tick **Advanced Setup** to configure more.



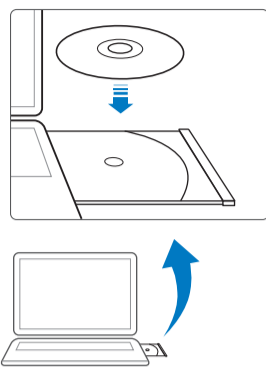
h Click **Save** and wait for your settings to take effect. Click **Finish** to complete the setup.



Method 2 Via CD Setup Wizard (For Windows users only)

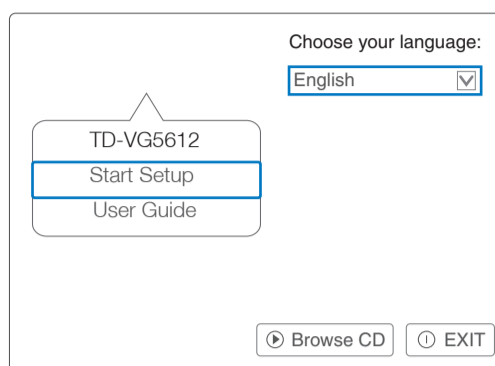
Note: Mac OS X and Linux users, please follow Method 1 to configure the modem router.

- 1 Insert the TP-LINK Resource CD into the CD-ROM drive.

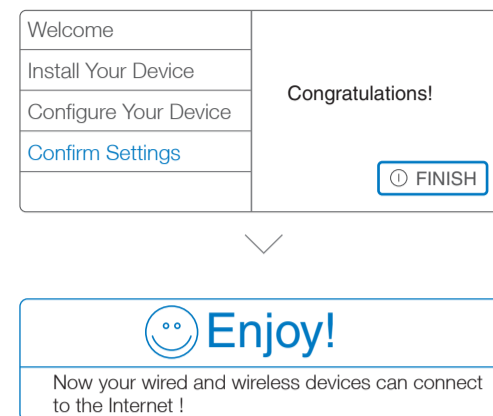


- 2 Choose your language and select TD-VG5612. Then click **Start Setup**. The Easy Setup Assistant will guide you through the setup process.

Note: If the main page does not display on your computer, browse the files on the CD and double click Autorun.exe.



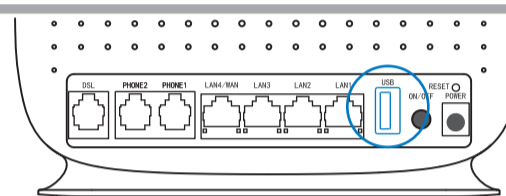
- 3 Click **FINISH** to complete the setup.



USB Features

The USB port can be used for media sharing, storage sharing and voice mail. You can also set up the FTP server to access your files remotely by connecting to the Internet.

Note: To learn more about the USB features, please visit <http://tp-link.com/app/usb>, retrieve Resource CD or simply scan the QR code.



USB sharing port



Frequently Asked Questions (FAQ)

Q1. What can I do if the login window does not appear?

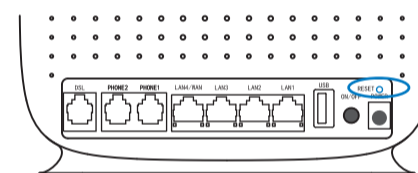
- A1. If the computer is set to a static or fixed IP address, change it to obtain an IP address automatically.
- A2. Verify <http://tplinkmodem.net> or <http://192.168.1.1> is correctly entered in the web browser and press Enter.
- A3. Use another web browser and try again.
- A4. Reboot your modem router and try again.
- A5. Disable the network adapter used currently then enable it again.

Q2. What can I do if I cannot access the Internet?

- A1. Check your cables and make sure they are all plugged in correctly, including the telephone line, Ethernet cable and power adapter.
- A2. Check to see if you can log on to the Web-Management page of the modem router. The default address of the Web-Management page is <http://tplinkmodem.net> or 192.168.1.1. If you can, try the following steps. (If you can not, please set your computer to obtain an IP address automatically and then try to access the Internet again.)
- A3. Consult your ISP and make sure all the VPI/VCI, Connection Type, account username and password are correct. If they are not, please replace them with the correct settings and try again.
- A4. If you still cannot access the Internet, please restore your modem router to its factory default settings and reconfigure your modem router following the instructions in this QIG.
- A5. Please contact our Technical Support if the problem still exists.

Q3. How do I restore the modem router to its factory default settings?

- A1. With the modem router powered on, press and hold down the RESET Button on the rear panel of the modem router for approximately 5 seconds.
- A2. Log into the Web Management page of the modem router, and go to System Tools->Factory Defaults, click Restore, then wait until the progress bar loading finished.



RESET Button
Press & Hold for 5 seconds

Q4. What can I do if I forget my password?

- **Web Management page password:**
Restore the modem router to its factory default settings and then use the default Username 'admin' and Password 'admin' to log in.
- **Wireless Network password:**
A1. The factory default password can be found on the product label printed on the bottom of the modem router.
A2. If you have changed your password, log into the modem router's Web Management page, go to Wireless->Wireless Security to obtain or reset your password.

LED Indicators

Name	Status	Indication
Power	On	System initialization complete.
	Off	Power is off.
DSL	On	DSL line is synchronized and ready to use.
	Flash	The DSL negotiation is in progress.
	Off	There is no connection to the DSL Port or DSL synchronization fails.
Internet	On	Internet connection is available.
	Off	No Internet connection or the modem router is operating in Bridge mode.
Wi-Fi	On	The wireless function is working properly.
	Off	The wireless function is disabled.
VoIP1/ VoIP2	On	The corresponding phone is off-hook.
	Off	The corresponding phone is on-hook.
WPS	On/Off Flash	Turns On when a WPS synchronization is established and automatically turns Off about five minutes later. A wireless device is trying to connect to the network via WPS. This process may take up to 2 minutes.
LAN (1-4)	On	The corresponding LAN Port is connected.
	Off	The corresponding LAN Port is not connected.
USB	On	The inserted USB device is identified and ready to use.
	Flash	A new USB device is being identified.
	Off	No USB device is plugged into the USB port.
3G	On	3G Internet is successfully connected.
	Flash	The modem router is connecting to the 3G Internet.
	Off	3G Internet is not connected or the modem router is operating in other modes.